

**HANDICAP PARKING NOTE:**  
 PROVIDE HANDICAP PARKING SIGN MOUNTED ON A FIXED OR MOVABLE POST OR OTHERWISE AFFIXED IN A VERTICAL POSITION SO THAT THE SIGN IS CLEARLY VISIBLE TO THE DRIVER OF A VEHICLE WHEN PARKED IN SUCH A LOCATION. A NOTICE SHALL BE AFFIXED TO THE ABOVE-GRADE SIGN OR POSTED ADJACENT TO IT STATING THE AMOUNT OF THE FINE ESTABLISHED BY SECTION 4511.09 OF THE OHIO REVISED CODE FOR THE OFFENSE OF PARKING A VEHICLE IN AN ACCESSIBLE PARKING SPACE IF IT IS NOT LEGALLY ENTITLED TO DO SO. THE FINE SHALL BE NOT LESS THAN TWO HUNDRED FIFTY (\$250.00) NOR MORE THAN FIVE HUNDRED DOLLARS (\$500.00).

**NOTE:**  
 CONTRACTOR SHALL VERIFY AND BE RESPONSIBLE FOR ALL DIMENSIONS, ELEVATIONS, AND CONDITIONS ON THE JOB AND THIS OFFICE MUST BE NOTIFIED OF ANY VARIATION FROM THE DIMENSIONS, ELEVATIONS, AND CONDITIONS SHOWN BY THESE DRAWINGS.

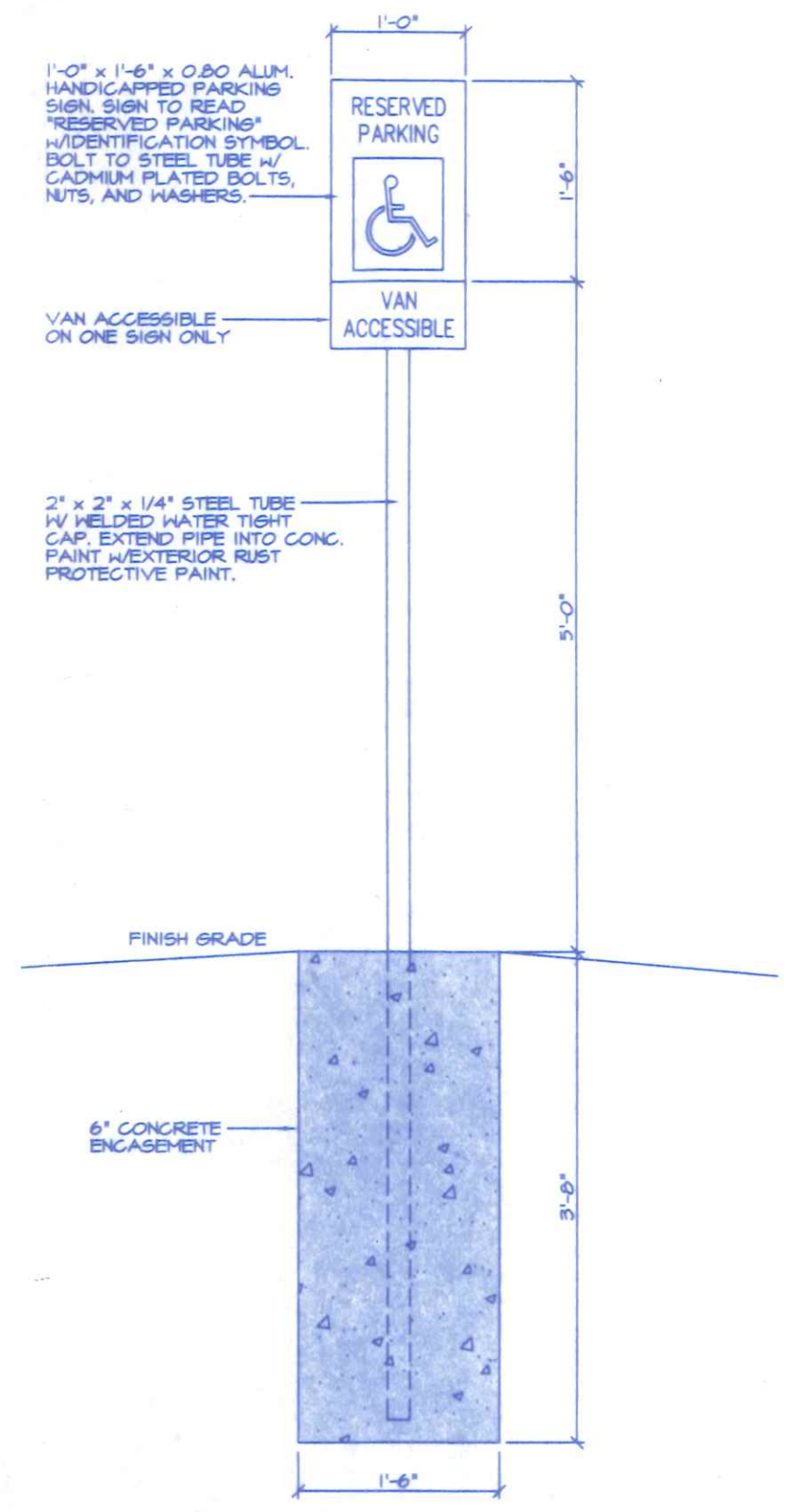


**OHIO UTILITIES PROTECTION SERVICE**  
 THO WORKING DAYS BEFORE YOU DIG CALL TOLL FREE 1-800-362-2764  
 \* NON-MEMBERS MUST BE CALLED DIRECTLY \*

**SITE PLAN**  
 SCALE: 1" = 60'-0"



**NOTE:**  
 AN APPROVED AUTOMATIC FIRE SUPPRESSION SYSTEM SHALL BE INSTALLED THROUGHOUT THE AREA BEING ALTERED IN ACCORDANCE WITH NFPA-13 AND THE O.B.C. LATEST ADDITION. THE ENTIRE BUILDING PRESENTLY HAS AN AUTOMATIC FIRE SUPPRESSION SYSTEM THROUGHOUT.



**HDCP. SIGN DETAIL**  
 SCALE: 3/4" = 1'-0"

REVISIONS
PERMITS 04-13-10

**SITE PLAN**  
**DAVID L. GERINGER P.E.**  
 Consulting Engineer

**PROPOSED BUILDING ALTERATIONS FOR  
 HENRY COUNTY BOARD OF ELECTIONS**

Date 04-07-10  
 Scale AS NOTED  
 Drawn D.L.G.  
 Job 201005  
 Sheet No. **A-1**

### ROOM FINISH SCHEDULE

NO.	ROOM NAME	FLOOR FINISH	BASE	WALLS				CEILING		REMARKS
				NORTH	SOUTH	EAST	WEST	MAT'L.	HGT.	
101	VESTIBULE	C.T.	C.T.	M. D.J.H.	D.J.H.	D.J.H.	* D.J.H.	A.C.T.	10'-0"	* 5/8" GYP. BD. OVER 1 1/2" 25 GA. 'Z' FURRING W/ 1 1/2" STYRO. INSUL. BETWEEN
102	LOBBY	CARPET	VINYL	M. D.J.H.	D.J.H.	D.J.H.	* D.J.H.	A.C.T.	10'-0"	* 5/8" GYP. BD. OVER 1 1/2" 25 GA. 'Z' FURRING W/ 1 1/2" STYRO. INSUL. BETWEEN
103	ELECTION ROOM	CARPET	VINYL	M. D.J.H.	D.J.H.	EX. D.J.H.	* D.J.H.	A.C.T.	8'-0"	* 5/8" GYP. BD. OVER 1 1/2" 25 GA. 'Z' FURRING W/ 1 1/2" STYRO. INSUL. BETWEEN
104	HALLWAY	CARPET/V. Y.T.	VINYL	M. D.J.H.	D.J.H.	D.J.H.	D.J.H.	A.C.T.	8'-0"	
105	BREAKROOM	V.T.	VINYL	M. D.J.H.	* D.J.H.	EX. D.J.H.	D.J.H. (NOTE #1)	A.C.T.	8'-0"	* 5/8" GYP. BD. OVER 1 1/2" 25 GA. 'Z' FURRING W/ 1 1/2" STYRO. INSUL. BETWEEN
106	EXIST. UNISEX RESTROOM	V.T.	6" COVERED VINYL	M. EX. D.J.H.	EX. D.J.H.	EX. D.J.H.	EX. D.J.H.	A.C.T.	8'-0"	* EXIST. FLOOR COVERING & BASE TO BE REMOVED & REPLACED W/ NEW V.T. & BASE
107	EXIST. UTILITY ROOM	V.T.	VINYL	M. EX. D.J.H.	EX. D.J.H.	EX. D.J.H.	EX. D.J.H.	A.C.T.	8'-0"	* EXIST. FLOOR COVERING & BASE TO BE REMOVED & REPLACED W/ NEW V.T. & BASE
108	MACHINE STORAGE	CARPET/V. Y.T.	VINYL	M. D.J.H.	* D.J.H.	D.J.H.	EX. D.J.H.	A.C.T.	8'-0"	* 5/8" GYP. BD. OVER 1 1/2" 25 GA. 'Z' FURRING W/ 1 1/2" STYRO. INSUL. BETWEEN
109	SERVER ROOM	CARPET	VINYL	M. D.J.H.	D.J.H.	D.J.H.	D.J.H.	A.C.T.	8'-0"	
110	FRONT OFFICE	CARPET	VINYL	M. D.J.H.	D.J.H.	D.J.H.	EX. D.J.H.	A.C.T.	10'-0"	
III	FILES	CARPET	VINYL	M. D.J.H.	D.J.H.	D.J.H.	D.J.H.	A.C.T.	8'-0"	

M. MATERIAL FINISH  
F. PAINT  
C.C. CONCRETE  
S.S. STAINLESS STEEL

D.J.H. 1/2" DRYWALL  
A.C.T. ACOUSTICAL CEILING TILE  
S.M. SMOOTH FINISH  
M.B.I.N.S. METAL BUILDING INSULATION

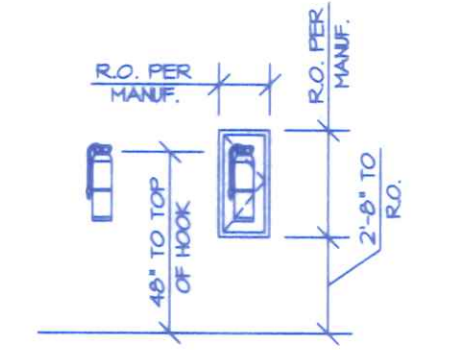
C.B. CONCRETE BLOCK  
V.T. VINYL TILE  
C.T. CERAMIC TILE  
INSUL. INSULATION

NOTE #1: 5/8" GYP. BD. OVER 3 5/8" 20 GA. METAL STUDS @ 16" C/C W/ 3 1/2" F.G. BATTS BETWEEN.

### DOOR SCHEDULE

DOOR NO.	DOOR SIZE	DOOR		DETAIL	LINTEL	GLAZING	THRES. HOLD.	HDWE.	FIRE RATING	DOOR CLOS.	REMARKS
		MAT'L. TYPE	FRAME								
101	3'-0" X 7'-0" X 1 3/4"	ALUM.	A	H-5-J-5	-	SAFETY	ALUM.	PUSH/PULL	-	YES	THUMB LOCK
102A	3'-0" X 7'-0" X 1 3/4"	ALUM.	A	H-3-J-3	L-2	SAFETY	ALUM.	PUSH/PULL	-	YES	
102B	3'-0" X 3'-6" X 1 3/4"	WD.	E	WD.	-	-	-	PASS	-	-	30" X 11" THK. LAMINATED PLYWOOD DR. W/ PDL SPRING (FURNISHED BY COUNTERTOP SUPPLIER)
102C	3'-0" X 3'-6" X 1 3/4"	WD.	E	WD.	-	-	-	PASS	-	-	30" X 11" THK. LAMINATED PLYWOOD DR. W/ PDL SPRING (FURNISHED BY COUNTERTOP SUPPLIER)
102D	2'-3'-0" X 7'-0" X 1 3/4"	WD.	D	H.M.	4	H-1-J-1	L-2	-	-	LOCK	
103A	3'-0" X 7'-0" X 1 3/4"	WD.	D	H.M.	1	H-4-J-4	L-1	-	-	LOCK	
103B	3'-0" X 7'-0" X 1 3/4"	WD.	D	H.M.	1	H-1-J-1	L-1	-	-	LOCK	
105	3'-0" X 7'-0" X 1 3/4"	H.M.	B	H.M.	-	H-2-J-2	-	-	ALUM.	LOCK	EXIST. DOOR TO BE REPLACED EXIST. H.M. FRAME TO REMAIN/ DEAD BOLT LOCK
106	3'-0" X 7'-0" X 1 3/4"	WD.	D	H.M.	1	H-1-J-1	L-1	-	-	LOCK	
107	3'-0" X 7'-0" X 1 3/4"	WD.	D	H.M.	1	H-1-J-1	L-1	-	-	LOCK	
108A	3'-0" X 7'-0" X 1 3/4"	WD.	F	H.M.	1	H-1-J-1	L-1	SAFETY	-	LOCK	
108B	3'-0" X 7'-0" X 1 3/4"	H.M.	B	H.M.	1	H-2-J-2	-	-	ALUM.	LOCK	EXIST. DOOR TO BE REPLACED EXIST. H.M. FRAME TO REMAIN/ DEAD BOLT LOCK
109	3'-0" X 7'-0" X 1 3/4"	WD.	F	H.M.	1	H-1-J-1	L-1	SAFETY	-	LOCK	

NOTE #1: DOOR HARDWARE SHALL BE LEVER TYPE TO COMPLY W/ ADAAG 4.13.4  
NOTE #2: THE MAX. FORCE REQUIRED FOR PUSHING OR PULLING OPEN AN INTERIOR DOOR SHALL BE 5 POUNDS.  
NOTE #3: ALL THRESHOLDS TO BE ADA APPROVED.



FIRE EXTINGUISHER CABINET MOUNTING

### ADAAG NOTES:

- Building entrance(s)/ exit(s) shall be accessible to comply with ADAAG 4.1.3(7) through 4.1.3(9), 4.5.2 and 4.1.3.6.
- Handles, pulls, latches, locks, and other operating devices on doors shall have a shape that is easy to grasp with one hand and does not require tight grasping, tight pinching or twisting of the wrist to operate; ADAAG 4.13.4.
- Signs which designate permanent room and spaces or provide directions of information about functional spaces of the building shall comply with ADAAG 4.1.3(16) and 4.30.1 to 4.30.7.
- All Electrical outlets, light switches, operable controls, receptacles, & operable equipment shall be placed within reach ranges (for wheelchair) specified in ADAAG 4.27.3, 15' to 48" A.F.F. for forward reach & 15" to 54" A.F.F. for side reach).

### GENERAL NOTES:

- All work shall comply with the Ohio Building Code, latest edition.
- All work shall be done in a quality manner consistent with the prevailing standards for the skilled trades involved.
- All material used on the project shall be new, first quality, undamaged, and free of defects or rust.
- All Hardware shall meet the requirements of OBC, and ADAAG 4.13.4. All doors shall open from the inside without special knowledge or effort.
- All interior finishes shall meet the requirements of OBC, interior finish materials shall not be permitted that have a smoke developed rating greater than 450 when tested in accordance w/ ASTM E84 listed in appendix A of the OBC.
- The contractor shall plan to secure approval as to specific color and style for finish materials, fixtures, trim, and coatings which go into the finished facility.

### WINDOW SCHEDULE

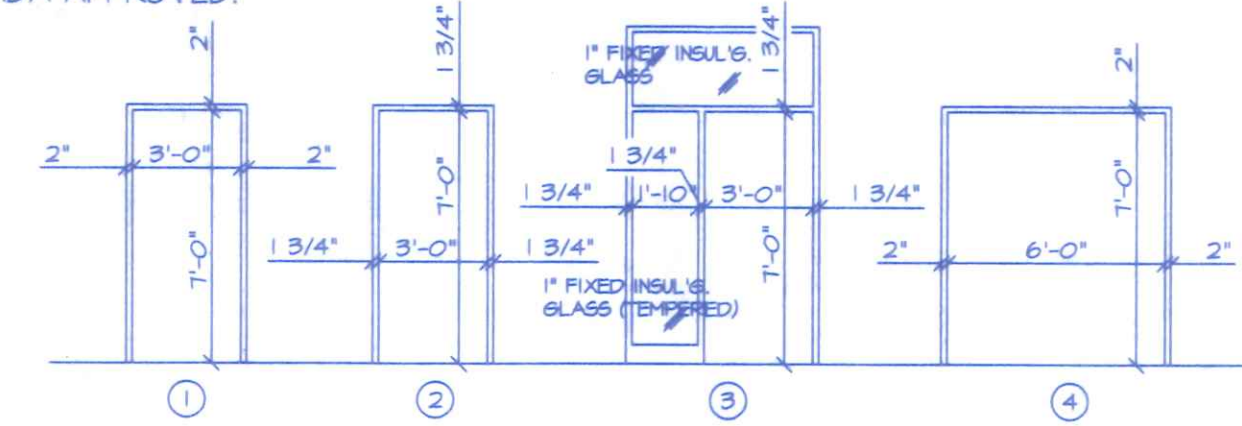
MARK	DESCRIPTION	LINTEL
A	ALUMINUM STOREFRONT FRAMING - w/ BRONZE FINISH AND 1" INSUL. GLASS LOW E - (R.O. 10'-3 1/2" X 5'-10 1/2" - TOP OF OPENING +10'-4" VERIFY) - WINDOW PANES ADJACENT TO DOOR TO BE SAFETY GLASS (COLOR SELECTION BY OWNER)	-
B	ALUMINUM STOREFRONT FRAMING - w/ BRONZE FINISH AND 1" INSUL. GLASS LOW E - (R.O. 22'-0" X 5'-10 1/2" - TOP OF OPENING +10'-4" VERIFY) - WINDOW PANES ADJACENT TO DOOR TO BE SAFETY GLASS (COLOR SELECTION BY OWNER)	-
C	"PELLA" SMARTSASH II SYSTEM GLAZED W/ 3/32" CLEAR GLASS, WITH SLIMSHADE & ALUM. GLAD WOOD FRAME (#4735) (R.O. 3'-11 3/4" X 2'-11 3/4") - TOP OF OPENING +10'-0"	L-1
D	1/4" SLIDING GLASS WINDOW (TEMPERED) w/ ALUMINUM TRACK, PULL KNOBS, AND LOCK - R.O. 2'-8" X 3'-6"	L-1
E	ALUMINUM WINDOW FRAMING w/ CLEAR TEMPERED INSULATED GLASS - R.O. 6'-0" X 3'-8"	L-1
F	ALUMINUM WINDOW FRAMING w/ CLEAR TEMPERED INSULATED GLASS - R.O. 2'-9" X 3'-8"	L-1

### LINTEL SCHEDULE

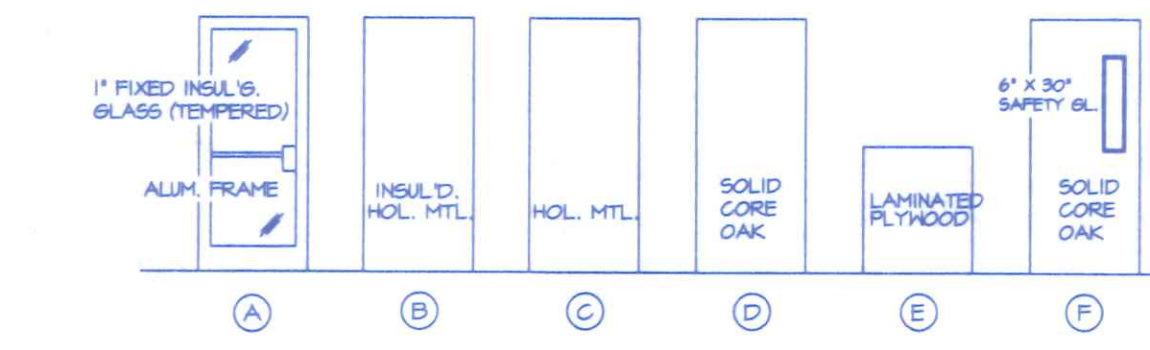
MARK	DESCRIPTION	BRG. EA. END
L-1	6" LIGHT GAUGE METAL FRAMING (20 GA. - 33 KSI) w/ WEB STIFFENERS @ SUPPORTS (2 - 600S162-33) - BRG. ELEV. +107'-2"	BEAR ON 1 STUD
L-2	10" LIGHT GAUGE METAL FRAMING (16 GA. - 50 KSI) w/ WEB STIFFENERS @ SUPPORTS (2 - 1000S200-54) - BRG. ELEV. +107'-2"	BEAR ON 2 STUDS

### WALL TYPES

	6", 20 GA. METAL STUDS @ 16" C/C (600S162-33-33 KSI) w/ 6" FIBERGLASS BATT. INSUL. & 5/8" GYP. BOARD EA. SIDE
	3 5/8", 20 GA. METAL STUDS @ 16" C/C (362S137-33-33 KSI) w/ 3 1/2" FIBERGLASS BATT. INSUL. & 5/8" GYP. BOARD EA. SIDE
	3 5/8", 20 GA. METAL STUDS @ 16" C/C (362S137-33-33 KSI) w/ 5/8" GYP. BOARD EA. SIDE

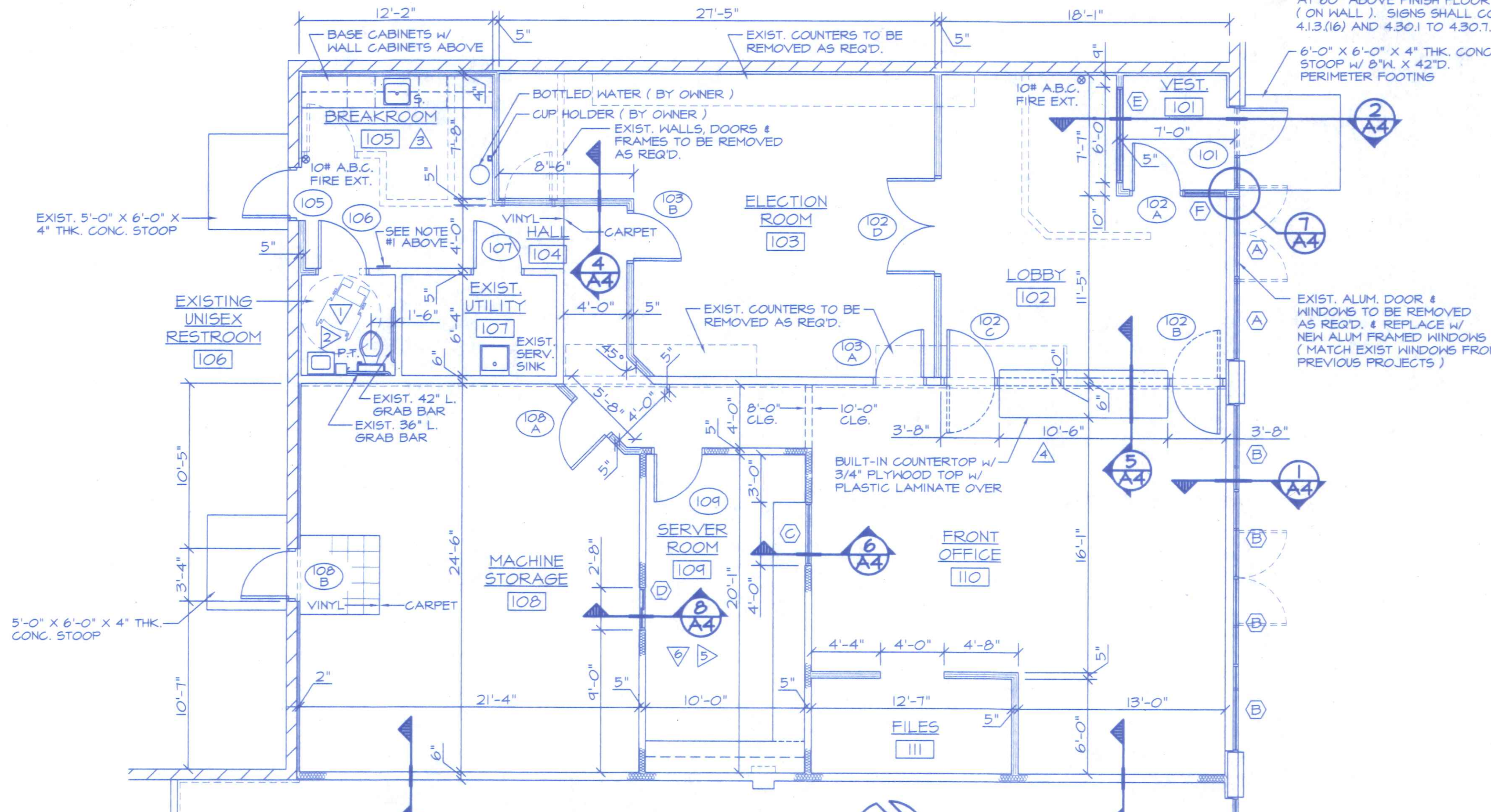


FRAME TYPES



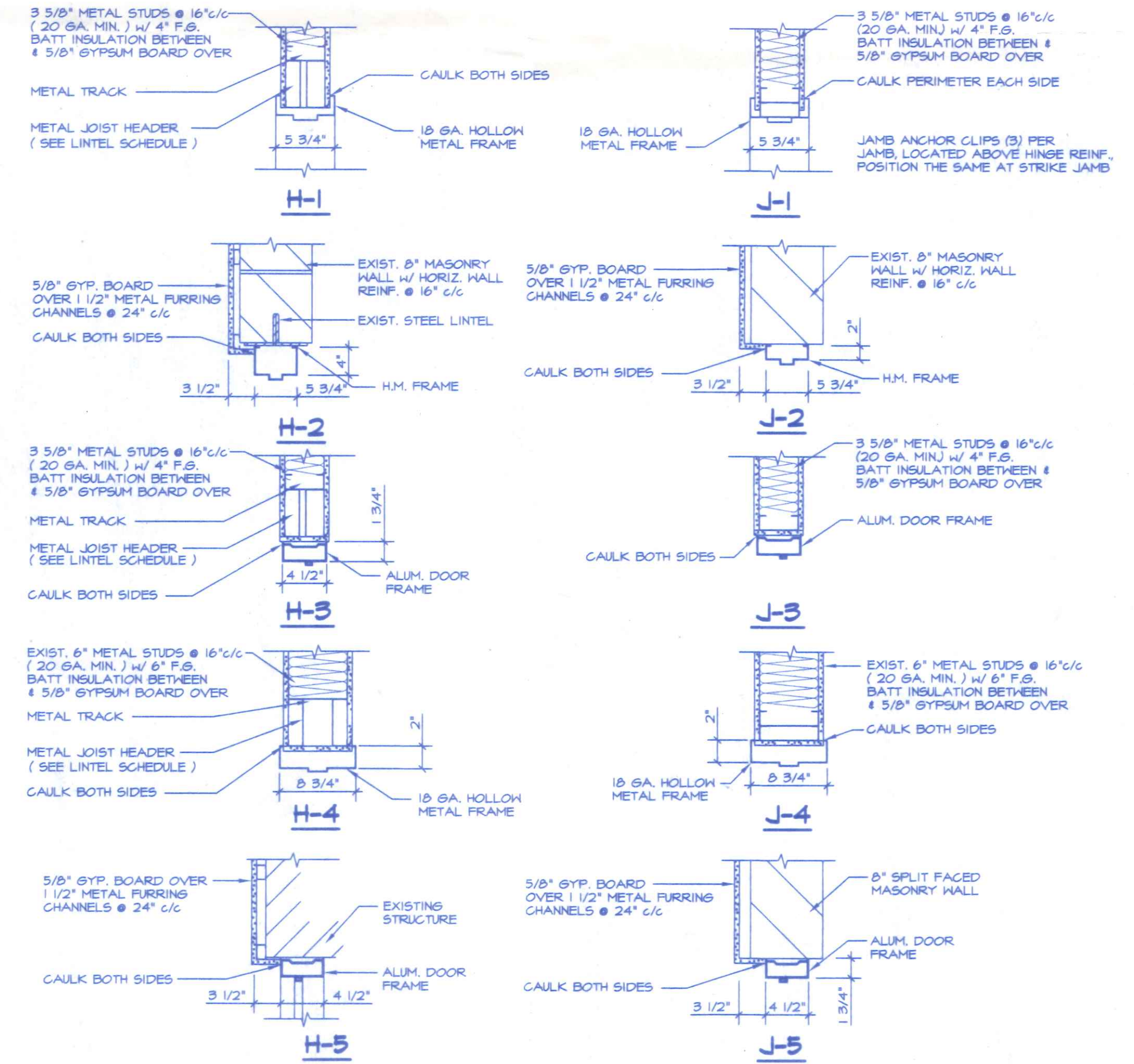
DOOR TYPES

NOTE #1: THE HANDICAPPED UNISEX RESTROOM SHALL BE DESIGNATED BY LEGIBLE SIGN. SIGN SHALL BE INSTALLED ON THE LATCH SIDE OF THE DOOR AT 60" ABOVE FINISH FLOOR TO CL OF THE SIGN (ON WALL). SIGNS SHALL COMPLY WITH ADAAG 4.1.3(16) AND 4.30.1 TO 4.30.7.



FLOOR PLAN

SCALE: 3/16" = 1'-0"



HEAD DETAILS

SCALE: 3/4" = 1'-0"

JAMB DETAILS

SCALE: 3/4" = 1'-0"